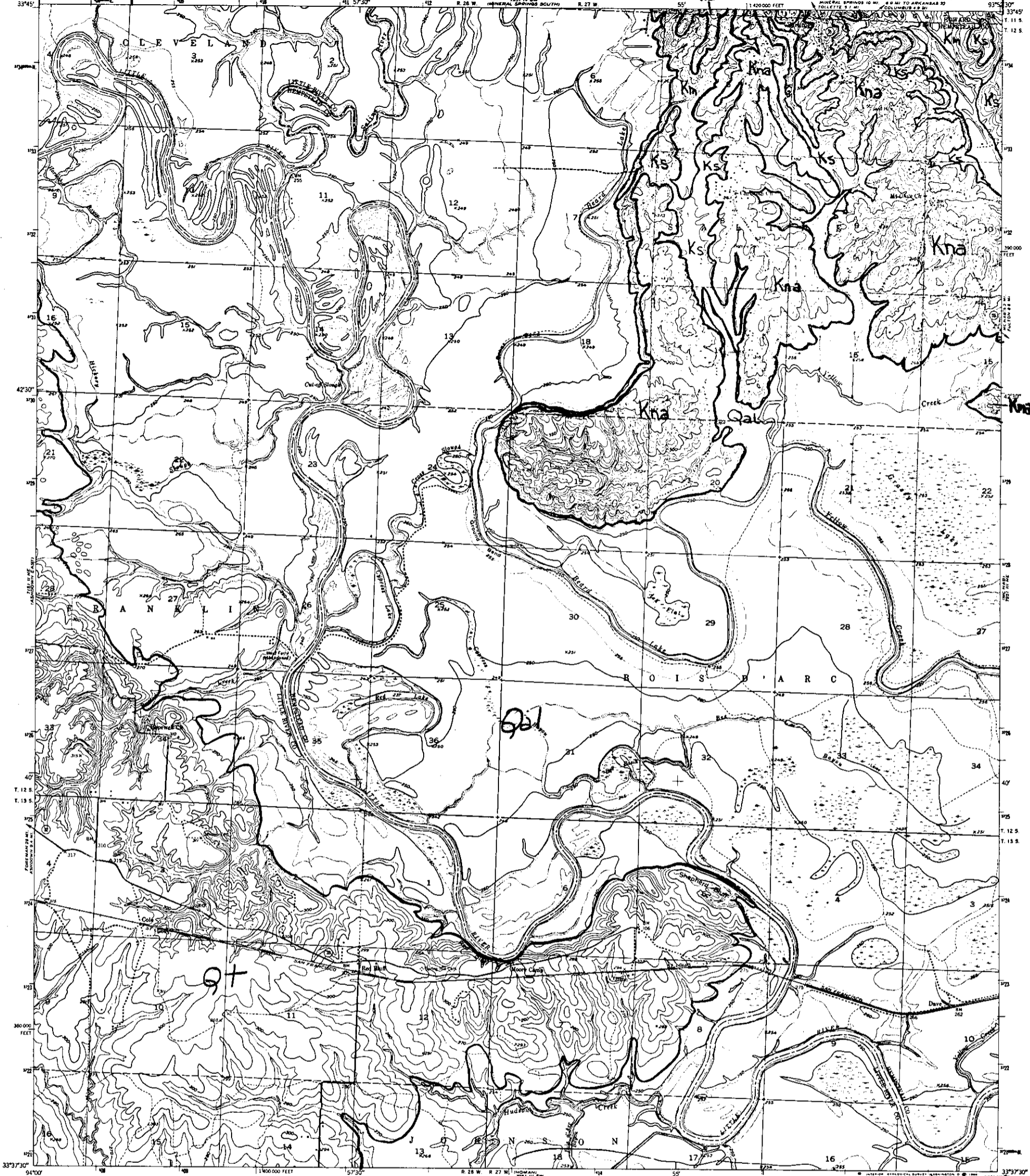
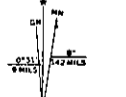


*this line*

*Reduce this line to*



Mapped, edited, and published by the Geological Survey  
Control by USGS, USC&GS and USCE  
Culture and drainage in part compiled from  
aerial photographs taken 1949  
Topography by plane table methods 1950  
Polyconic projection, 1927 North American datum  
10,000 foot grid based on Arkansas coordinate system,  
south zone  
1000 meter Universal Transverse Mercator grid ticks  
200 U.S. statute miles in base



SCALE 1:24 000  
CONTOUR INTERVAL 10 FEET  
DOTTED LINES REPRESENT HALF INTERVAL CONTOURS  
DATUM IS NEAR SEA LEVEL

*Clardy-Bush*  
ROAD CLASSIFICATION  
Heavy-duty *CLARDY-BUSH* Light-duty  
Medium-duty *CLARDY-BUSH* Unimproved dirt  
U.S. Route State Route

**MASTER COPY**

THIS MAP COMPLIES WITH NATIONAL MAP ACCURACY STANDARDS  
FOR SALE BY U.S. GEOLOGICAL SURVEY, DENVER, COLORADO 80225 OR WASHINGTON, D.C. 20242  
AND BY THE ARKANSAS GEOLOGICAL AND CONSERVATION COMMISSION, LITTLE ROCK, ARKANSAS  
A FOLDER DESCRIBING TOPOGRAPHIC MAPS AND SYMBOLS IS AVAILABLE ON REQUEST

RED BLUFF, ARK.  
N3337 5-W9352 5/7.5  
1950  
AMS 7251 III NW-SERIES V884

*Clardy-Bush*